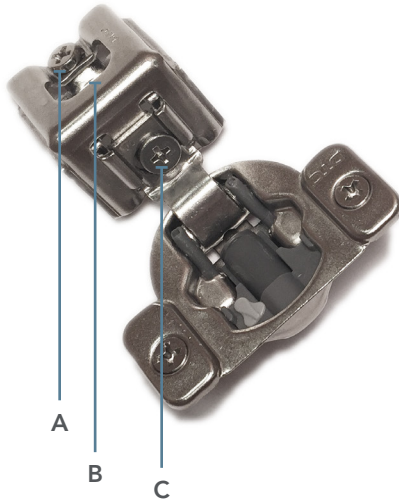
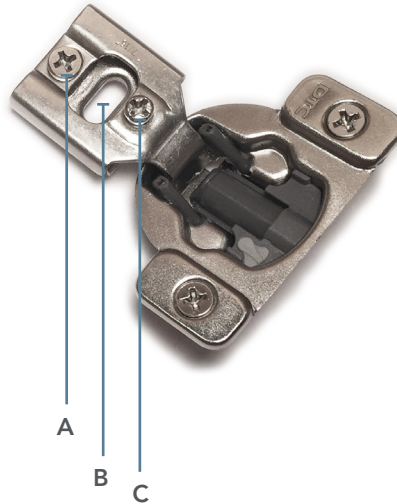


6-WAY ADJUSTABLE HINGE

FULL OVERLAY



PARTIAL OVERLAY



A. In & Out Adjustment

For bowed and warped doors.
(See illustrations below.)

B. Up & Down Adjustment

For misaligned doors. Loosen screws, adjust, then re-tighten screws.

C. Side to Side Adjustment

For gaps between double doors.
Clockwise to adjust out, counter clockwise to adjust in.

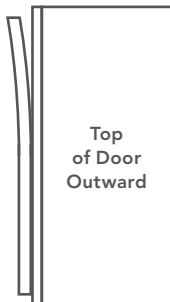
IN AND OUT ADJUSTMENT



1. **Adjust Top Hinge**
Turn screw "A" clockwise.
2. **Adjust Middle Hinge**
Turn screw "A" counter clockwise.
3. **Adjust Bottom Hinge**
Turn screw "A" clockwise.



1. **Adjust Top Hinge**
Turn screw "A" counter clockwise.
2. **Adjust Middle Hinge**
Turn screw "A" counter clockwise.
3. **Adjust Bottom Hinge**
Turn screw "A" clockwise.

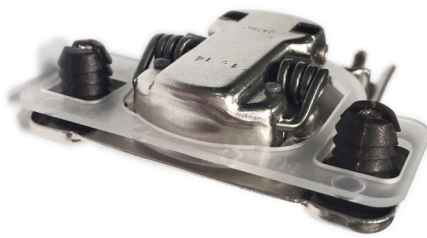
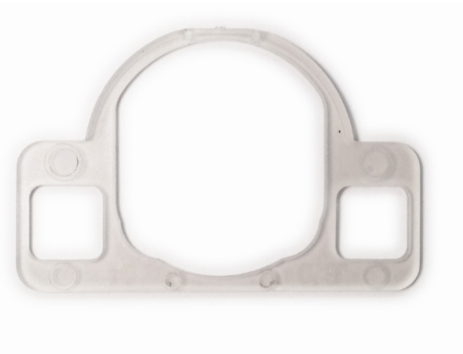


1. **Adjust Top Hinge**
Turn screw "A" clockwise.
2. **Adjust Middle Hinge**
Turn screw "A" counter clockwise.
3. **Adjust Bottom Hinge**
Turn screw "A" counter clockwise.



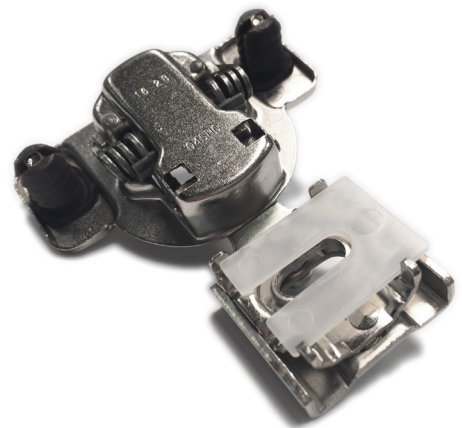
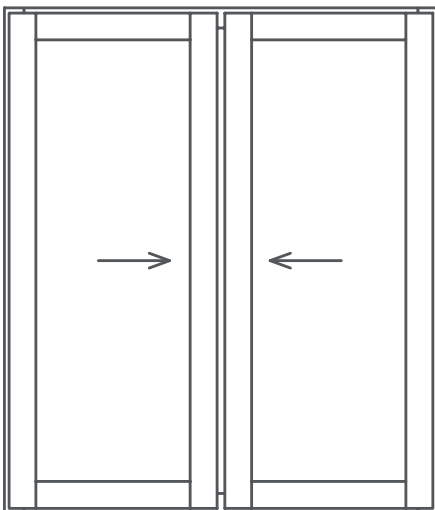
1. **Adjust Top Hinge**
Turn screw "A" counter clockwise.
2. **Adjust Middle Hinge**
Turn screw "A" clockwise.
3. **Adjust Bottom Hinge**
Turn screw "A" counter clockwise.

HINGE SPACER



A hinge spacer can be installed behind the hinge for additional in and out adjustment with bowed or warped doors.

FRAME SPACER



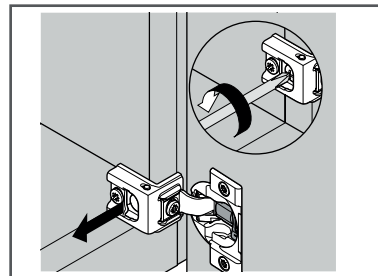
Frame spacers can be installed behind the arm of the hinge for additional adjustment with gaps between double doors.

ANGLE RESTRICTION CLIP

Assembly Instructions

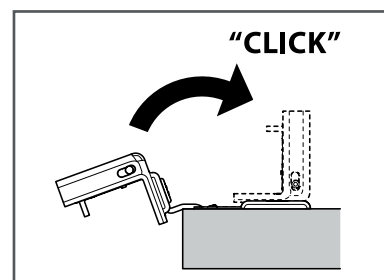
STEP 1 - REMOVE DOOR

Loosen and remove installation screws.



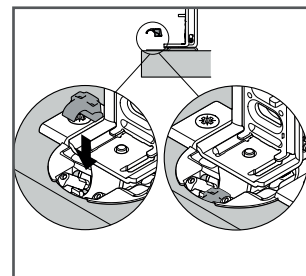
STEP 2 - ROTATE HINGE ARM

Rotate hinge arm to closed position.



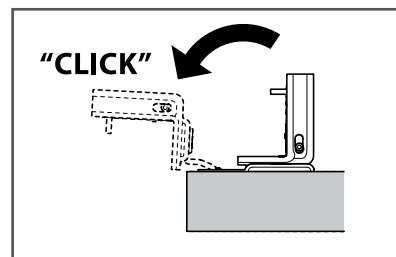
STEP 3 - INSERT ANGLE RESTRICT

Insert angle restriction clip into base of hinge arm.



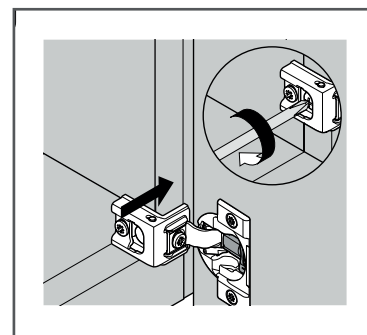
STEP 4 - ROTATE HINGE ARM

Rotate hinge arm to open position to secure.



STEP 4 - REATTACH DOOR

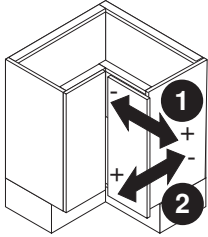
Align door and reattach by inserting and tightening installation screws.



HINGE ADJUSTMENTS

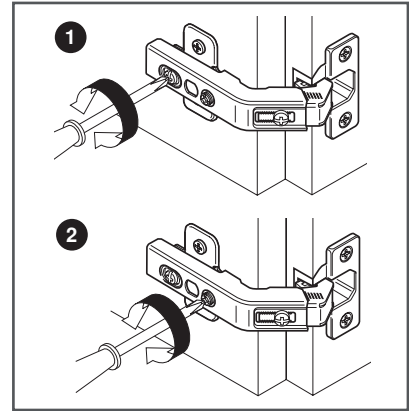
Clip Bi-Fold Hinge

SIDE / DEPTH ADJUSTMENT

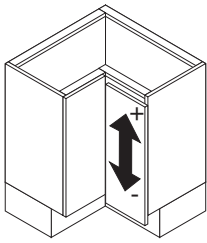


1. **SLIDE ADJUSTMENT** - Loosen back screw, position door, re-tighten.

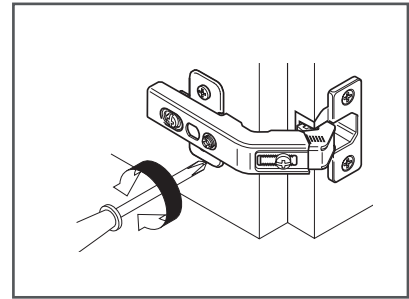
2. **DEPTH ADJUSTMENT** - Turn front screw to achieve desired door position.



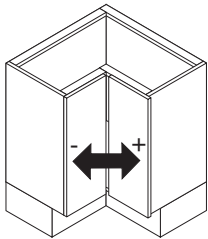
HEIGHT ADJUSTMENT



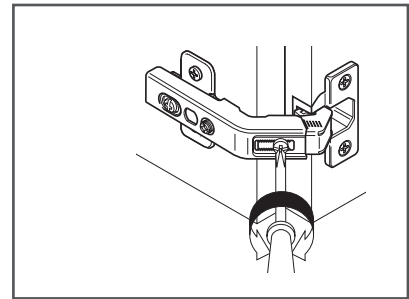
Loosen screws on mounting plate. Adjust door to position, tighten screws.



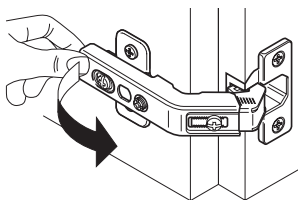
GAP ADJUSTMENT



Loosen center gap screw, adjust arm, re-tighten.



DOOR REMOVAL AND INSTALLATION



Release the lever under the hinge arm to remove.

To reinstall, place the hinge on the mounting plate and push the back with finger pressure. The "CLIP" sound confirms a secure attachment.

